

Lewis & Irene

threaded with love

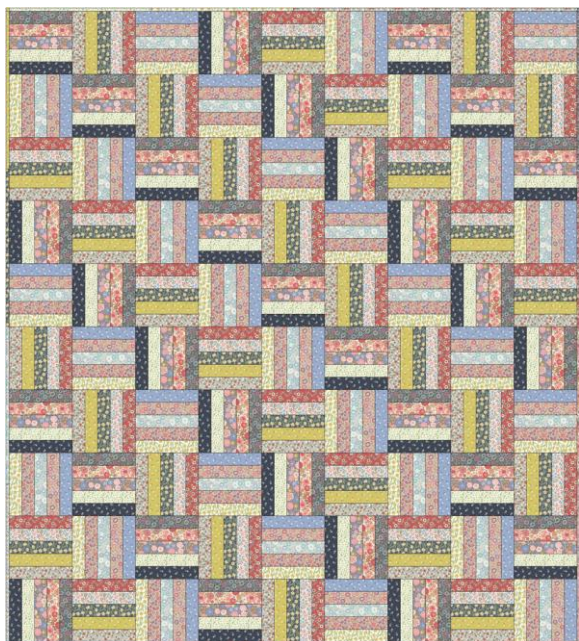
Flo's Little Flowers Quilt

Designed and made by Sally Ablett

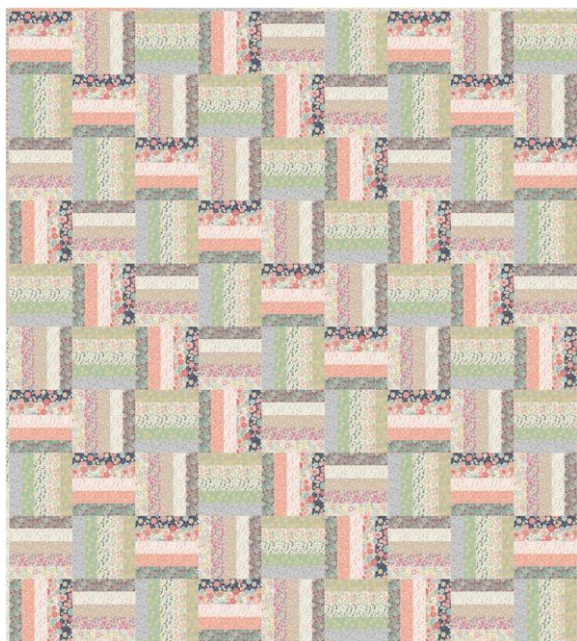
Size: 45" x 50"

Block size: 5½" x 5½"

DESIGN 1



DESIGN 2



FABRIC REQUIREMENTS (Flo's Little Flowers Collection)

Use ¼" seam allowance throughout. Press all seams open unless otherwise noted

DESIGN 1

A fat ¼ of each of the fabrics

For Block 1:

- FLO2.4 / FLO4.2 / FLO4.3 / FLO6.2 / FLO1.6

For Block 2:

- FLO5.3 / FLO7.2 / FLO3.4 / FLO1.3 / FLO5.4

For Block 3:

- FLO1.4 / FLO2.3 / FLO2.2 / FLO7.4 / FLO3.1

50" x 54" wadding and backing

Wadding: **Warm and White** from The Warm Company

DESIGN 2

A fat ¼ of each of the fabrics

For Block 1:

- FLO4.4 / FLO4.1 / FLO6.3 / FLO1.2 / FLO5.2

For Block 2:

- FLO5.1 / FLO6.1 / FLO1.5 / FLO7.3 / FLO2.1

For Block 3:

- FLO3.2 / FLO7.1 / FLO6.4 / FLO3.3 / FLO1.1

50" x 54" wadding and backing

Wadding: **Warm and White** from The Warm Company

CUTTING

From each of the fabrics cut:

30 x 1½" x 5½"

MAKING UP BLOCKS

Lay out the fabrics for block 1

DESIGN 1



DESIGN 2



Sew in rows; you will make 30 in total

Lay out the fabrics for block 2

DESIGN 1



DESIGN 2



Again, sew in rows; you will make 30 in total

Lay out the fabrics for block 3

DESIGN 1



DESIGN 2



Sew in rows; you will make 30 in total

ASSEMBLE QUILT TOP

Lay out the blocks for each row as in the main diagram

Sew your rows, pressing the seams to the right or left

So row one you will press to the right, and the next will be to the left, doing this to each row

Join the rows to together to complete the quilt top

COMPLETION

Sandwich quilt top, wadding and backing. Pin or baste layers

Quilt as desired

Double bind edges with 2½" from left over fabrics