

# Lewis & Irene

*threaded with love*

## Vintage Circus Quilt

*Designed and made by Sally Ablett*

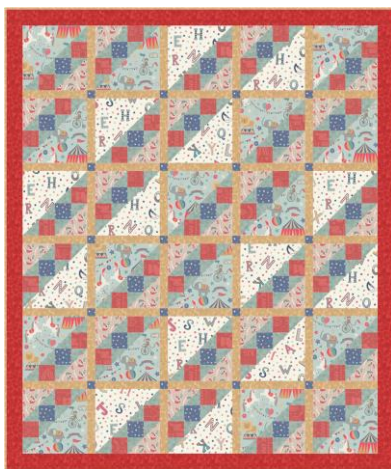
Size: 48" x 57"

Block size: 8½" x 8½"

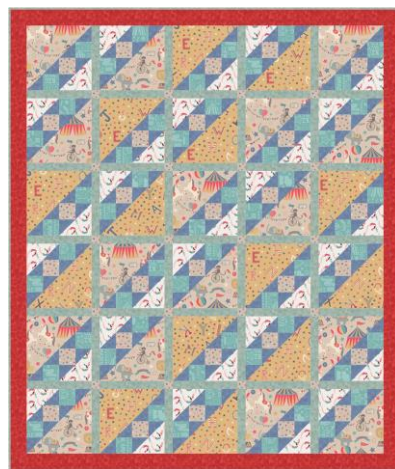
**DESIGN 1**



**DESIGN 2**



**DESIGN 3**



### FABRIC REQUIREMENTS (Vintage Circus Collection)

#### **DESIGN 1**

Fabric 1: ½yd - ½mtr - A141.1 (The big top cream)  
Fabric 2: ¾yd - 30cm - A142.2 (Roll up! Roll up!)  
Fabric 3: ½yd - ½mtr - A143.3 (Vintage letters blue)  
Fabric 4: fat¼ - A144.2 (Little star antique gold)  
Fabric 5: ¾yd - 30cm - A145.2 (Acrobats blue)  
Fabric 6: ¾yd - ¾mtr - BB67 (Soft gold)  
Fabric 7: ⅝yd - 60cm - BB70 (Bluebell)  
Fabric 8: ½yd - ½mtr - BB75 (Red lacquer)  
52" x 61" wadding and backing

#### **DESIGN 2**

Fabric 1: ½yd - ½mtr - A141.2 (The big top blue)  
Fabric 2: ¾yd - 30cm - A142.3 (Roll up! Roll up! soft red)  
Fabric 3: ½yd - ½mtr - A143.1 (Vintage letters cream)  
Fabric 4: fat¼ - A144.3 (Little star antique blue)  
Fabric 5: ¾yd - 30cm - A145.3 (Acrobats natural)  
Fabric 6: ¾yd - ¾mtr - BB67 (Soft gold)  
Fabric 7: ⅝yd - 60cm - BB75 (Red lacquer)  
Fabric 8: ½yd - ½mtr - BB75 (Red lacquer)  
52" x 61" wadding and backing

#### **DESIGN 3**

Fabric 1: ½yd - ½mtr - A141.3 (The big top natural)  
Fabric 2: ¾yd - 30cm - A142.1 (Roll up! Roll up! blue)  
Fabric 3: ½yd - ½mtr - A143.2 (Vintage letters antique gold)  
Fabric 4: fat¼ - A144.1 (Little star natural)  
Fabric 5: ¾yd - 30cm - A145.1 (Acrobats white)  
Fabric 6: ¾yd - ¾mtr - BB67 (Soft gold)  
Fabric 7: ⅝yd - 60cm - BB75 (Red lacquer)  
Fabric 8: ½yd - ½mtr - BB67 (Soft gold)  
52" x 61" wadding and backing

## CUTTING

Cut across width of fabric. Note some strips are cut along length of fabric, parallel to selvedge.

1. From fabric 1 cut:
  - 8 x 8<sup>7</sup>/<sub>8</sub>" x 8<sup>7</sup>/<sub>8</sub>" cut in half diagonally once (bottom left to top right)
2. From fabric 2 cut:
  - 60 x 2<sup>1</sup>/<sub>2</sub>" x 2<sup>1</sup>/<sub>2</sub>"
3. From fabric 3 cut:
  - 8 x 8<sup>7</sup>/<sub>8</sub>" x 8<sup>7</sup>/<sub>8</sub>" cut in half diagonally once (bottom left to top right)
4. From fabric 4 cut:
  - 30 x 2<sup>1</sup>/<sub>2</sub>" x 2<sup>1</sup>/<sub>2</sub>"
  - 20 x 1<sup>1</sup>/<sub>2</sub>" x 1<sup>1</sup>/<sub>2</sub>"
5. From fabric 5 cut:
  - 15 x 4<sup>7</sup>/<sub>8</sub>" x 4<sup>7</sup>/<sub>8</sub>" cut in half diagonally once (bottom left to top right)
6. From fabric 6 cut:
  - 49 x 1<sup>1</sup>/<sub>2</sub>" x 8<sup>1</sup>/<sub>2</sub>"
7. From fabric 7 cut:
  - 2 x 2<sup>1</sup>/<sub>2</sub>" x 48<sup>1</sup>/<sub>2</sub>"
  - 2 x 2<sup>1</sup>/<sub>2</sub>" x 53<sup>1</sup>/<sub>2</sub>"
8. From fabric 8 cut:
  - 75 x 2<sup>7</sup>/<sub>8</sub>" x 2<sup>7</sup>/<sub>8</sub>" cut in half diagonally once

## MAKING UP BLOCKS

Use ¼" seam allowance throughout. Press all seams open unless otherwise noted

**DESIGN 1**



*Block 1*

**DESIGN 2**



*Block 1*

**DESIGN 3**



*Block 1*



*Block 2*



*Block 2*



*Block 2*

Lay out the fabric for your block as in the block diagram

Start from the bottom row by sewing the small triangles to the squares

Sew a triangle of fabric 8 to a square of fabric 2 and then a triangle of fabric 8

Keep sewing each row as in the block diagram

Sew the rows together and then add the small and large triangle to the block. You will need 25 in total. Look at the main diagram as to which way the block is set

## MAKING UP QUILT

Lay out all of the blocks as in main diagram

Number one row will have a strip of sashing in between each block

The next row will be a sashing row with a small square of fabric 4 in between the sashing strips.  
Keep going until you have all the rows sewn together

Sew all the rows together

Next add the border strips sides and then top and bottom

## QUILTING

Sandwich quilt top, wadding and backing together

Quilt by hand or machine as desired

Trim backing and wadding to size

## BINDING

Use your favourite method of fabrics 6 to bind the quilt